



STAIN PROOF
MILDEW RESISTANT
BLEACH CLEANABLE
COLOR THAT LASTS

LINK
LUXURY PERFORMANCE RUGS
FALL 2020

LIVE IN LUXURY.

ABOUT OUR RUGS



A close-up photograph showing the texture of two different rug materials. The top rug is a light, off-white color with a fine, woven texture. The bottom rug is a dark grey color with a more pronounced, ribbed texture. The two rugs are layered, with the light rug partially covering the dark one.

LUXURY

LINK's debut Luxury Performance Rug collection combines artisanal master-weavers with yarns engineered for performance.

All of our rugs are Handwoven or Handloomed in India and Nepal by traditional artisanal Persian and Tibetan weavers.

Quality is of utmost importance, so we leave it to the masters to create our designs. Our Superfine Handloom Rugs are made with 250 knots per inch—the densest, finest weave structure possible. That's almost 4 million knots in a 9'x12' rug. The solution dyed acrylic yarns are as fine as silk, so the look and feel of these rugs reflects the same level of quality and character.



PERFORMANCE

All of our rugs are woven with Sunbrella™ Solution Dyed Acrylic yarns, making them inherently stain and fade resistant. Engineered to perform in the desert heat or low country humidity, Link Luxury Performance Rugs are mildew proof and easy to clean.

SIGNATURE COLORS

In an exclusive partnership with Sunbrella™, we have created a signature color palette of Solution Dyed Acrylic yarns that coordinate with our indoor-outdoor fabric collections. We offer a selection of vibrant colors that span through the perfect neutrals and bright bold hues.







SHADES OF WHITE

We designed the collection to incorporate a range of whites that are challenging to produce in traditional wool or silk weaving. This means stains are no longer a problem and white rugs stay white. Our solution dyed Sunbrella™ yarns offer both the rich look and soft feel you'd expect from silk and wool with the added benefit of clean crisp whites and worry-free maintenance.



WOVEN TO ORDER

These rugs have specific variables which can be customized (such as size, color placement and pile height) and will be woven to order upon receipt of your deposit.

We invite you to choose a pattern or texture of interest and play with our online tool to specify these details, print a rendering or place a quote request. This category

includes complimentary colors we have chosen and sampled, so you can choose from those we've already trialed and request a sample to see the color in person, sent directly to your door. Depending on the manufacturing technique and size of the rug, these will take between **4 weeks to 6 months** for production and shipping.





CUSTOM ORDERS

These rugs incorporate customizable patterns, colors, scaling of stripes and borders.

In this category, you'll find a range of options that we believe are beautiful as well as the ability to dream up your own version. This category includes complimentary colors we have in our sample inventory, so you can choose from those we've already trialed and request a sample to see the color in person, sent directly to your door. Depending on the manufacturing technique and size of the rug, these will take between **4 weeks to 6 months** for production and shipping.

COLLECTION



SHIBORI DIAMOND



TIBETAN RIDGE



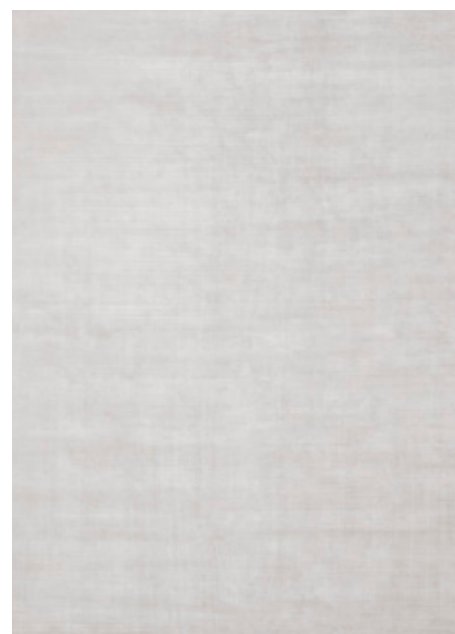
MOJAVE



PLATEAU STRIPE



EVEREST

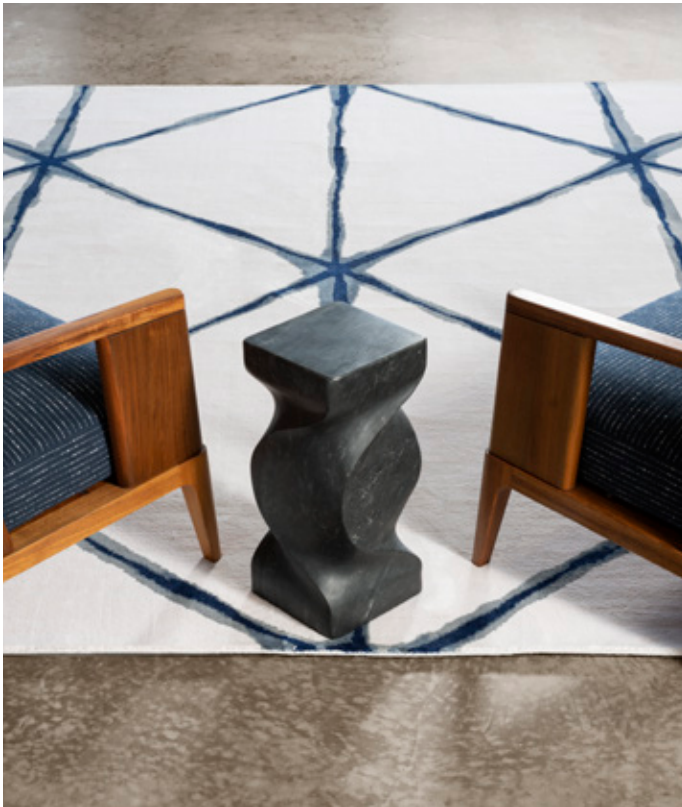


PLATEAU



LIVE IN
LUXURY

SHIBORI DIAMOND



Shibori Diamond is a large scale pattern inspired by the traditional Japanese shibori dye technique. The diamond patterns intersect to create a dynamic, powerful statement rug with a soft and plush cut pile.

Designed by Link Design Studio

*Lead Time: 4 – 6 Months (Please note this rug is woven to order. Production lead time begins upon receipt of a 50% deposit.)**

100% Solution Dyed Acrylic Sunbrella Yarns

- Fade Proof
- Stain Proof
- Bleach Cleanable
- Mildew Resistant

Standard Sizes: 5x7, 8x10, 9x12, 10x14 & 12x15

Number of Colors in Rug: 4
 Structure: Super Fine
 Construction: Hand Knotted
 Knot Type: Persian
 Knots Per Square Inch: 100
 Technique: Cut Pile
 Pile Height / Thickness:7MM / 0.5IN
 Country of Origin: India
 Rug Pad: Available Upon Request



MELON



STEEL



COBALT



BLUE STEEL

*Due to the global circumstances surrounding COVID-19, each rug will need to be custom quoted for a current lead time. Thank you for your patience and understanding during these unprecedented times.

TIBETAN RIDGE



Tibetan Ridge is a textured rug featuring a single color in an interplay of cut and loop that creates a subtle and sophisticated backdrop for any interior scheme. The fineness of the weave is unparalleled and creates a velvet-like structure with an incredibly soft hand.

Designed by Link Design Studio

*Lead Time: 2 – 4 Months (Please note this rug is woven to order. Production lead time begins upon receipt of a 50% deposit.)**

100% Solution Dyed Acrylic Sunbrella Yarns

- Fade Proof
- Stain Proof
- Bleach Cleanable
- Mildew Resistant

Standard Sizes: 5x7, 8x10, 9x12, 10x14 & 12x15

Number of Colors in Rug: 1
 Structure: Super Fine
 Construction: Hand Loomed
 Knot Type: Tibetan
 Knots Per Square Inch: 250
 Technique: Cut + Loop Pile
 Pile Height / Thickness: 6MM / .375IN
 Country of Origin: Nepal
 Rug Pad: Available Upon Request



NATURAL



FLAX



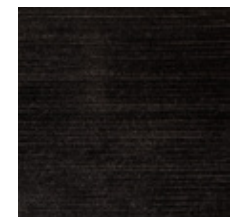
STONE



STERLING



STEEL



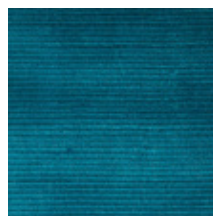
CHARCOAL



COBALT



AQUA



TURQUOISE



BLUE STEEL

**Due to the global circumstances surrounding COVID-19, each rug will need to be custom quoted for a current lead time. Thank you for your patience and understanding during these unprecedented times.*

MOJAVE



Mojave is a dense, tightly woven rug that is hand cut on the tips to give it a perfectly imperfect surface texture. The single color shifts in saturation across the rug to give it a bit of movement while the border adds a modern frame to the overall design. LINK offers the capability to specify the border size, placement and color to create the perfect ground setting for any room.

Designed by Link Design Studio

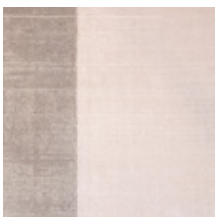
*Lead Time: 2 – 4 Months (Please note this rug is woven to order. Production lead time begins upon receipt of a 50% deposit.)**

100% Solution Dyed Acrylic Sunbrella Yarns

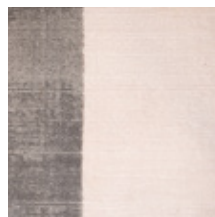
- Fade Proof
- Stain Proof
- Bleach Cleanable
- Mildew Resistant

Standard Sizes: 5x7, 8x10, 9x12, 10x14 & 12x15

Number of Colors in Rug: 2
 Borders: Vertical, Horizontal or Framed
 Structure: Super Fine
 Construction: Hand Loomed
 Knot Type: Tibetan
 Knots Per Square Inch: 250
 Technique: Loop + Tipsheared Pile
 Pile Height / Thickness: 6MM / 0.375 IN
 Country of Origin: Nepal
 Rug Pad: Available Upon Request



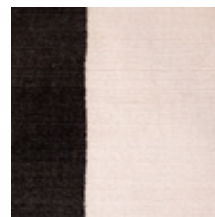
STONE



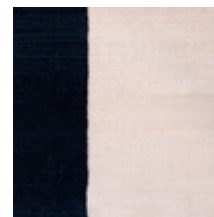
STERLING



STEEL



CHARCOAL



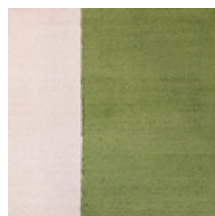
COBALT



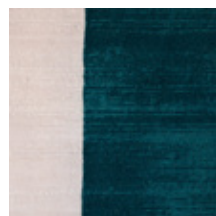
BLUE STEEL



MELON



SPRING



TURQUOISE

**Due to the global circumstances surrounding COVID-19, each rug will need to be custom quoted for a current lead time. Thank you for your patience and understanding during these unprecedented times.*

PLATEAU STRIPE



Plateau Stripe is a handcarved striped rug with multiple pile heights to create dimension in a room. The soft surface is cut by precise lines that are capable of being designed to any layout you can envision.

Designed by Link Design Studio

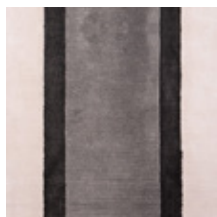
*Lead Time: 2 – 4 Months (Please note this rug is woven to order. Production lead time begins upon receipt of a 50% deposit.)**

100% Solution Dyed Acrylic Sunbrella Yarns

- Fade Proof
- Stain Proof
- Bleach Cleanable
- Mildew Resistant

Standard Sizes: 5x7, 8x10, 9x12, 10x14 & 12x15

Number of Colors in Rug: 3
 Structure: Super Fine
 Construction: Hand Loomed
 Knot Type: Tibetan
 Knots Per Square Inch: 250
 Technique: Cut + Carved Pile
 Pile Height / Thickness:6MM / .375IN
 Country of Origin: Nepal
 Rug Pad: Available Upon Request



STERLING



SPA



COBALT



BLUE STEEL

**Due to the global circumstances surrounding COVID-19, each rug will need to be custom quoted for a current lead time. Thank you for your patience and understanding during these unprecedented times.*

EVEREST



Everest is LINK's most plush, dense solid rug. Handknotted in India by skilled artisans, the single color rug has a cloud-like surface with a matte, woollike appearance and rich depth.

Designed by Link Design Studio

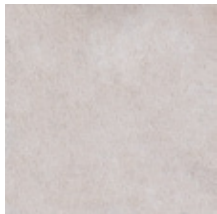
*Lead Time: 4 – 6 Months (Please note this rug is woven to order. Production lead time begins upon receipt of a 50% deposit.)**

100% Solution Dyed Acrylic Sunbrella Yarns

- Fade Proof
- Stain Proof
- Bleach Cleanable
- Mildew Resistant

Standard Sizes: 5x7, 8x10, 9x12, 10x14 & 12x15

Number of Colors in Rug: 1
 Structure: Fine
 Construction: Hand Knotted
 Knot Type: Persian
 Knots Per Square Inch: 100
 Technique: Cut Pile
 Pile Height / Thickness: 7MM / 0.5IN
 Country of Origin: India
 Rug Pad: Available Upon Request



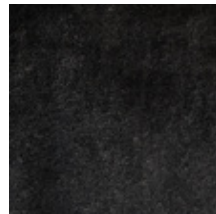
NATURAL



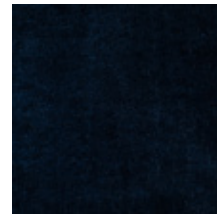
STERLING



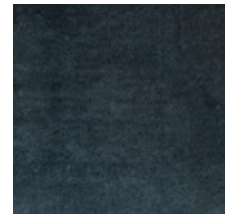
STEEL



CHARCOAL



COBALT



BLUE STEEL

**Due to the global circumstances surrounding COVID-19, each rug will need to be custom quoted for a current lead time. Thank you for your patience and understanding during these unprecedented times.*

PLATEAU



Plateau offers a solid, slightly textured surface created by the Tibetan weave structure. The superfine weave, which features almost 4 million knots in a 9'x12' rug, appears most similar to a solid silk rug, reflecting light to give a subtle sheen.

Designed by Link Design Studio

Lead Time: 1 – 2 Months, Steel, Carbon, Cobalt, Flax and Turquoise
Quick Ship: 2 – 4 Weeks, Natural, Sterling, Stone and Blue Steel
 (Please note this rug is woven to order. Production lead time begins upon receipt of a 50% deposit.)*

100% Solution Dyed Acrylic Sunbrella Yarns

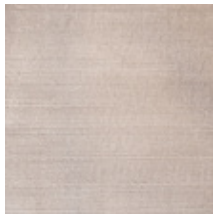
- Fade Proof
- Stain Proof
- Bleach Cleanable
- Mildew Resistant

Standard Sizes: 5x7, 8x10, 9x12, 10x14 & 12x15

Number of Colors in Rug: 1
 Structure: Super Fine
 Construction: Hand Loomed
 Knot Type: Tibetan
 Knots Per Square Inch: 250
 Technique: Cut Pile
 Pile Height / Thickness: 6MM / .375IN
 Country of Origin: Nepal
 Rug Pad: Available Upon Request



NATURAL



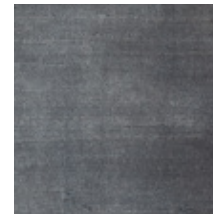
FLAX



STONE



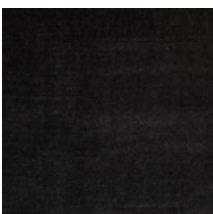
STERLING



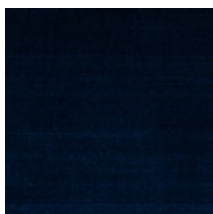
BLUE STEEL



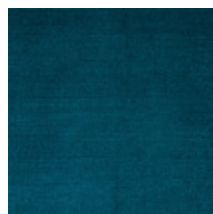
STEEL



CHARCOAL



COBALT



TURQUOISE

*Due to the global circumstances surrounding COVID-19, each rug will need to be custom quoted for a current lead time. Thank you for your patience and understanding during these unprecedented times.



RUG CARE AND MAINTENANCE

SOLUTION DYED ACRYLIC

All Link Luxury Performance Rugs are woven from 100% Sunbrella™ Solution Dyed Acrylic yarns.

Solution Dyed Acrylic is a short fiber spun into a long staple length for handmade rug production. It is not uncommon for the rug to “shed” any loose fibers after installation and for the first few months of use. This is not a fault and will occur as the pile blooms and the rug settles into the space from weaving, finishing and rolled transit. Regular vacuuming is recommended to allow the fibers to release and the pile to open.

The appearance of a pile rug is similar to that of a silk velvet, therefore there will be significant directionality within the rug's color and sheen. Be sure to take this into account when placing rugs in a room or vacuuming. The yarns used in Link rugs are the same as those in the fabric collection, however the density of the pile when viewed from above can appear 10-20% more saturated than when woven into fabric form. Likewise, the pile height creates the optical sensation of color saturation, therefore the higher the pile, the darker the color will appear.

REGULAR MAINTENANCE

Rugs should be cleaned and swept or vacuumed weekly to avoid accumulation of dirt or particles within the pile. Although solution dyed acrylic does not promote mildew growth, mildew may grow on foreign substances on the surface of the fibers. Rugs should not be left outdoors, especially during wet weather conditions as this can promote mildew growth.

Bag-less vacuums are not recommended as they can cause damage to the binding of the rug. If your vacuum has a beater bar, it should be set to the highest raised setting or turned off to avoid any damage to the pile.

Dry spills and stains should be vacuumed first to remove all particles caught between fibers in the pile. Please see the Care & Cleaning video on www.linkoutdoor.com for a demonstration on how to clean spills.



Most stains can be cleaned with a mild soap and warm water solution. Apply with a spray bottle and sponge briskly, then rinse to remove soap and air dry. Diluted chlorine bleach may also be used in stain removal—we recommend a solution of one part bleach to two parts water. Rinse thoroughly and dry.

Professional cleaning is recommended if spills cannot be cleaned with household products.

CRUSHING, CREASING & WRINKLING

Keep rug flat to avoid wrinkling or creasing. Use a rug pad to keep rug secure in place on wooden or stone floors. Crushing from furniture or footprints can be removed by vacuuming or manipulating the pile by hand or placing a thin, wet cotton cloth on the surface of the fibers and using an iron to remove the indentation.

RUG TERMS AND CONDITIONS

TERMS

50% deposit and signature on final rendering or strikeoff required to begin production; balance in full including freight due prior to shipment.

PRICING

All prices are net wholesale to the trade, F.O.B. Dallas, TX. Customer is responsible for all shipping, handling and insurance charges which will be reflected on all invoices. Prices are subject to change without notice. Please confirm prices with your local Link Outdoor sales representative. A valid resale certificate must be provided or tax will apply.

WARRANTY AND CLAIMS

Link Outdoor offers a three year fade resistant guarantee on all rugs from the date of purchase. All rugs are woven with the highest quality solution dyed yarns. The warranty does not cover color loss from deterioration caused by normal wear and tear, stains from environmental pollution, negligence or weather soiling.

Link rugs are not meant to be left outdoors permanently.

Any processing by a third party voids the warranty.

This warranty protects against Link Outdoor rugs becoming unserviceable due to fading from normal usage and exposure conditions, including sunlight, mildew and atmospheric chemicals. This warranty protects the original purchaser of the Link Rug. This warranty protects against Link Rugs becoming unserviceable due to fading from normal usage and exposure conditions, including sunlight, mildew and atmospheric chemicals. This warranty does not cover normal care and cleaning; damage from misuse. The original yarn supplier reserves the right to inspect the Rug submitted for claim. Link will supply new equivalent Rug to replace the Rug that becomes unserviceable. Consumers and end-users should contact Link directly with any warranty claims.

RETURNS

All cancellations or returns must be authorized by Link Outdoor and may be subject to a restocking fee or forfeiture of deposit.



RUG PADS, TESTING & DETAILS

RUG PADS

Two styles of rug pads are available and recommended to extend the life of your rug. The interior rug pad soaks up any spills to protect floors as well as provide extra cushioning. The exterior rug pad provides security to keep the rug in place while allowing liquid to flow through without puddling. Please contact your Link representative for pricing, or see below.

RUG PAD PRICING

LINK Rug Size	Rug Pad Size	Price
5 x 7	4.10 x 6.10	\$165
8 x 10	7.10 x 9.10	\$280
9 x 12	8.10 x 11.10	\$385
10 x 14	9.10 x 13.10	\$495
12 x 15	11.10 x 14.10	\$635

Note: Pricing for Runners, Round and Customs Rugs will be determined based on final size.

LEAD TIMES

All lead times depend upon the size of the rug and the level of customization required. Because these rugs are produced in Nepal and India, where the environment is strongly impacted by monsoon season, lead times may vary when there are not enough dry days to allow rugs to move through the finishing process. Your customer service rep will alert you in regards to any delays that may occur due to environmental issues.

The lead times below are approximate and do not include transit time.

LEAD TIME ESTIMATIONS PER RUG & SIZE

Rug Name	Country of Manufacture	Quality	Strikeoff	5 x 7	8 x 10	9 x 12	10 x 14	12 x 15
Plateau: 4 colors on Rolls	Nepal	4-8 wks.	4-8 wks.	2 mo.	2-3 mo.	3 mo.	3-4 mo.	4 mo.
Plateau: All other colors	Nepal	Superfine Handloom	4-8 wks.	2 mo.	2-3 mo.	3 mo.	3-4 mo.	4 mo.
Tibetan Ridge	Nepal	Superfine Handloom	4-8 wks.	2 mo.	2-3 mo.	3 mo.	3-4 mo.	4 mo.
Shibori Diamond	Nepal	Handknotted	4-8 wks.	3-4 mo.	3-4 mo.	4-5 mo.	5 mo.	5-6 mo.
Mojave	Nepal	Superfine Handloom	4-8 wks.	2 mo.	2-3 mo.	3 mo.	3-4 mo.	4-5 mo.
Plateau Stripe	Nepal	Superfine Handloom	4-8 wks.	2 mo.	2-3 mo.	3 mo.	3-4 mo.	4-5 mo.
Everest	India	Handknotted	4-8 wks.	3-4 mo.	4-5 mo.	4-5 mo.	5 mo.	6 mo.

CUSTOMIZING YOUR RUG

Semi-Custom Rugs

For all semi-custom options, please refer to our website, www.linkoutdoor.com/rugs

On the site, you will be able to select the size rug you desire to customize and see all available options to change, such as colors (within the available palette), pile height, color placement and border(s). Create as many renderings as you would like and once you decide which rug is right for you, email the rendering to rugs@linkoutdoor.com for a quote.

Custom Rugs

Link Luxury Performance Rugs can be customized to meet your specific needs. Special Order rugs include Round Rugs, Oversize Rugs (over 12'x15'), Runners, Stairs and Wall to Wall. Each special order rug will need to be custom designed and priced and the lead time for each will be determined by the complexity of the project.

Please note there is a 30% upcharge on all custom orders including rounds and runners.

The maximum size for Handloomed Rugs is 18' Wide x 50' Long. The maximum size for Handknotted Rugs is 28' Wide x 50' Long.

The chart below outlines which options are available for customization on each Rug design. All semi-custom options can be selected and viewed in a rendering through our website. All custom options will have to be made by our design team and can be requested by email at rugs@linkoutdoor.com or through your local sales rep. Custom Renderings will be produced within 8-10 business days maximum, depending on the level of intricacy needed for your project. Whether Semi-Custom or Custom, each of these options will need to move through the Strikeoff process prior to placing an order, unless the client chooses to forgo the strikeoff (only with written approval).

CUSTOMIZABLE OPTIONS FOR EACH RUG DESIGN

Rug Name	Color/Color Placement	Custom Color	Pile Height	Border	Scale of Design/Stripe	Direction of Stripe/Pattern	Size of Rug	Round Rug
Plateau	Semi-Custom	Custom	Custom	Semi-Custom	N/A	N/A	Semi-Custom	Semi-Custom
Tibetan Ridge	Semi-Custom	Custom	Custom	Semi-Custom	N/A	Semi-Custom	Semi-Custom	Semi-Custom
Shibori Diamond	Semi-Custom	Custom	Custom	N/A	Custom	Custom	Semi-Custom	N/A
Mojave	Semi-Custom	Custom	Custom	N/A	Semi-Custom	N/A	Semi-Custom	Semi-Custom
Plateau Stripe	Semi-Custom	Custom	Custom	N/A	Semi-Custom	Semi-Custom	Semi-Custom	Semi-Custom
Everest	Semi-Custom	Custom	Custom	Custom	N/A	N/A	Semi-Custom	Semi-Custom

STRIKEOFFS

Should you decide to move forward with the rendering(s) to see a woven sample, whether semi-custom or custom, send a signed copy of that rendering with the quote to rugs@linkoutdoor.com. You will then receive a Credit Card Authorization form for the strikeoff to be put into production. Both your signature on the rendering and this form are necessary to ensure all details are ordered correctly.

Strikeoffs are available within 8 wks. at \$150 for a 1'x1' (recommended for plain rugs) or \$250 for a 2'x3' (recommended for patterned rugs).

TESTING

All Link Luxury Performance Rugs pass recommended residential testing which includes an 8/8 pass on the Pill Test and 3.7/5 Residential Hexapod. If inquiring about contract testing, please reach out directly to rugs@linkoutdoor.com for your specific testing requirements.

WHITE GLOVE DELIVERY

Contact your Link sales representative or Customer Service for a quote.

RUSH ORDERS/RUSH DELIVERY OPTIONS

Link Luxury Performance Rugs may have the option to offer Rush Orders or Rush Delivery options for an upcharge. This is determined on a case-by-case basis and will require an upcharge depending on the circumstances.

LINK

2007 N Royal Lane, Suite 100
Dallas, TX 75229
T (972) 385-7380 · F (214) 723-5680
info@linkoutdoor.com
www.linkoutdoor.com