



LIBERTY.
FABRICS

THE MODERN ARCHIVE COLLECTION



THE MODERN ARCHIVE COLLECTION

The new Modern Archive Collection from Liberty pays homage to the brand's long-standing legacy as the home of London design. Celebrating the timelessness with which Liberty Fabrics' prints endure as icons within every passing decade, the collection showcases 13 key archival designs – each recoloured and reinterpreted for a new generation of Liberty interiors, bolstered by 23 beautifully coloured plain fabrics in three textures. This versatile Plains collection unifies the entire range and is reflected in many of the recoloured Heritage prints, bringing the collection together and allowing the use of multiple patterns in a cohesive way.

Introducing the highest quality bases of heavy linen, velvet and cotton, expertly printed in Lake Como – the heartland of the Italian textile industry. The collection harnesses cutting-edge textile technologies along with the superior performance of high quality natural fibres, to achieve exquisite hand feel and drape with exceptional technical capabilities.

The six colour stories of the Liberty Modern Archive Collection pay homage to the passions of the collector, offering a nod to the world of antiques and artworks, scarves and ceramics that have long been curated within the London emporium's wood-panelled walls. Pewter, Lapis, Lichen, Lacquer, Jade and Dragonfly tell the story of Liberty through the ages, uniting a rich and diverse archive of English hand-drawn patterns.

LIBERTY.
FABRICS

PATTERN INSPIRATION

FELIX RAISON

Felix Raison is a large-scale paisley layout, its central elements drawn from an archival paisley shawl dating from the 1850s.

HEBE

Hebe is a striking one-colour version of the classic Hera Liberty print – a design that has been in the Liberty pattern books since the 1890s. The print has been attributed to Arthur Silver, founder of the Silver Studio, although some believe Christopher Dresser to be the original artist. Now a brand trademark, Hera is a signature design at Liberty.

HERA FEATHER

Hera Feather is a true heritage icon, adorning Liberty designs ever since the mid-1890s. First registered in a woven version in Dublin in 1876, it was probably first printed by Rosendale Printing Company for Liberty in the 1890s. Originally thought to have been created by Arthur Silver, founder of the Silver Studio, recent research has now tentatively attributed the design to Christopher Dresser. Now a Liberty trademark, Hera has appeared woven and printed on furnishing fabrics, dress fabrics and scarves.

KATHERINE NOUVEAU

Liberty was at the forefront of the revival of Art Nouveau and Arts and Crafts designs in the late 1950s. Derived from a 1960s Arts and Crafts style design, Katherine Nouveau has previously appeared on scarves, dress fabrics and furnishing fabrics.

MARQUESS GARDEN

Marquess Garden is created from an intricate floral shawl design dating from 1977, representing the more heavily patterned Arts and Crafts style of design in the Liberty archive. The print has been coloured distinctively, with emerging hints of bright and intense tones.

STRAWBERRY MEADOWFIELD

Strawberry Thief was designed by William Morris in 1883, and is part of a group of designs incorporating animals with flowers. Liberty first produced it as a furnishing fabric in 1979. Strawberry Meadowfield is a one-colour version of the original.

ZENNOR ARBOUR

Created in the Liberty Design Studio, Zennor Arbour is made up from original pencil sketches of flowers, building up into a widely branching rose tree. Elements of the original Zennor Forest design appear here reimagined in a mono-coloured print version, depicting only the artwork's floral elements.

SHAND VOYAGE

Shand Voyage is inspired by one of a collection of mid-19th century, hand-painted shawl designs found in the Liberty archive, reworked in the design studio. Although the name is derived from the town of Paisley on the west coast of Scotland, the pattern known as paisley originated in Kashmir.

PATRICIA

Patricia is a richly stylised and exquisitely detailed floral, created in the 1990s. Tree of Life designs are heavily inspired by the Indian chintz patterns that first arrived in Europe at the end of the seventeenth century.

IANTHE BLOOM MULTI

First printed for Liberty in 1967, lanthe is a quintessential example of French Art Nouveau, with its highly stylised flowers arranged into an artfully sinuous layout. Originally designed as a wallpaper border by R. Beauclair in c.1902, lanthe is one of Liberty's most iconic Art Nouveau designs.

IANTHE BLOOM MONO

lanthe Bloom Stencil is a one-colour version of lanthe – discovered hidden in the archive, the design appears in the form it was first used by Liberty in the 1960s.

FARIA FLOWERS

Faria Flowers is a hand drawn and painted floral design, drawn from studies taken at the Royal Chelsea and Hampton Court, London Flower shows.

LADY KRISTINA ROSE

Lady Kristina was created from a series of exquisitely hand-painted artworks from the 1920s and '30s. The reimagined version, Lady Kristina Rose, features a newly formed repeating layout.



PEWTER

Pewter is a modern neutrals story which uses a base palette of strong yet muted colour to reflect the exquisite designs of Liberty's origin – such as the Great Shawl and Cloak Emporium, with its fine lace and shawls, delicate slippers, silk and night jackets. Inspired by Liberty craftsmanship and the brand's contribution to the Aesthetic Movement and the Georgian Era Revival, these touchstones are transformed into an ultra-contemporary, stripped-back palette for modern interiors. This versatile collection is designed to sit alongside and underpin five other richly-pigmented colour stories, each reflecting a different facet of Liberty's long and ever-evolving history.



REFERENCE: 06571102A



CHILTERN LINEN
Strawberry Meadowfield
Pewter Plaster Pink

REFERENCE: 06711101D



MARLOW LINEN
Hebe
Pewter Plaster Pink

REFERENCE: 06581102B



CHESHAM SATEEN
Zennor Arbour
Pewter Plaster Pink

REFERENCE: 06711102A



MARLOW LINEN
Patricia
Pewter

REFERENCE: 06571101B



CHILTERN LINEN
Felix Raison
Pewter

REFERENCE: 06571103A



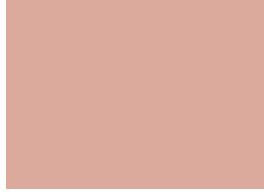
CHILTERN LINEN
Ianthe Bloom Mono
Pewter Plaster Pink

REFERENCE: 06591101A



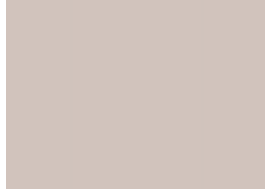
COTTON VELVET PLAIN
Mole

REFERENCE: 06631101F



EMBERTON LINEN PLAIN
Ointment

REFERENCE: 06631101B



EMBERTON LINEN PLAIN
Down

REFERENCE: 06786200S



IANTHE VELVET
Pewter

REFERENCE: 06631101A



EMBERTON LINEN PLAIN
Grosgrain

REFERENCE: 06591101B



COTTON VELVET PLAIN
Fennel

REFERENCE: 06631101D



EMBERTON LINEN PLAIN
Sioe

REFERENCE: 06651101D



VINTAGE VELVET
Hera Feather
Pewter

REFERENCE: 06651105D



VINTAGE VELVET
Lady Kristina Rose
Pewter

REFERENCE: 06561106E



LADBROKE LINEN
Ianthe Bloom Multi
Pewter

REFERENCE: 03591101D



COTTON VELVET
Felix Raison
Pewter

REFERENCE: 03591104B



COTTON VELVET
Ianthe Bloom Multi
Dark Pewter

REFERENCE: 06621103A



EMBERTON LINEN
Strawberry Meadowfield
Pewter

REFERENCE: 06561101D



LADBROKE LINEN
Hera Feather
Pewter

REFERENCE: 06571104C



CHILTERN LINEN
Ianthe Bloom Stencil
Pewter

REFERENCE: 06651102A



VINTAGE VELVET
Strawberry Meadowfield
Dark Pewter



PEWTER

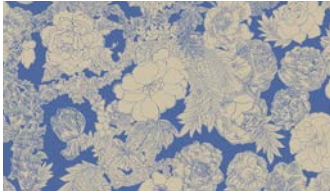


LAPIS



The crisp blues and whites of Lapis evoke the beauty of the fashionable Dutch and Persian porcelain of the late 19th century, following the discovery of cobalt. Diverse patterns are unified by these bold and concise hues, which can be mixed and mismatched with confidence. Rare minerals such as lapis lazuli, widely used in jewellery and pewterware, provide inspiration for the signature plain linen – Lapis. These rich blues are complemented by coloured plain linens in Ointment and Down.

REFERENCE: 06561104A



LADBROKE LINEN
Zennor Arbour
Lapis

REFERENCE: 06571104B



CHILTERN LINEN
Ianthe Bloom Stencil
Lapis

REFERENCE: 06561105A



LADBROKE LINEN
Patricia
Lapis

REFERENCE: 06581101A



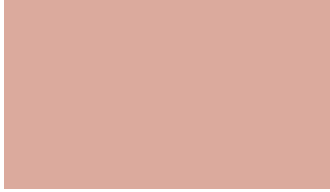
CHESHAM SATEEN
Marquess Garden
Lapis

REFERENCE: 06631101J



EMBERTON LINEN PLAIN
Lapis

REFERENCE: 06631101F



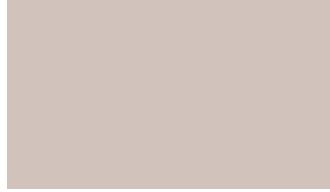
EMBERTON LINEN PLAIN
Ointment

REFERENCE: 06786200P



IANTHE VELVET
Plaster Pink

REFERENCE: 06631101B



EMBERTON LINEN PLAIN
Down

REFERENCE: 06631101L



EMBERTON LINEN PLAIN
Starling

REFERENCE: 06561101B



LADBROKE LINEN
Hera Feather
Lapis

REFERENCE: 06561106C



LADBROKE LINEN
Ianthe Bloom Multi
Lapis

REFERENCE: 06561103C



LADBROKE LINEN
Strawberry Meadowfield
Lapis

REFERENCE: 06651101B



VINTAGE VELVET
Hera Feather
Lapis

REFERENCE: 06651103B

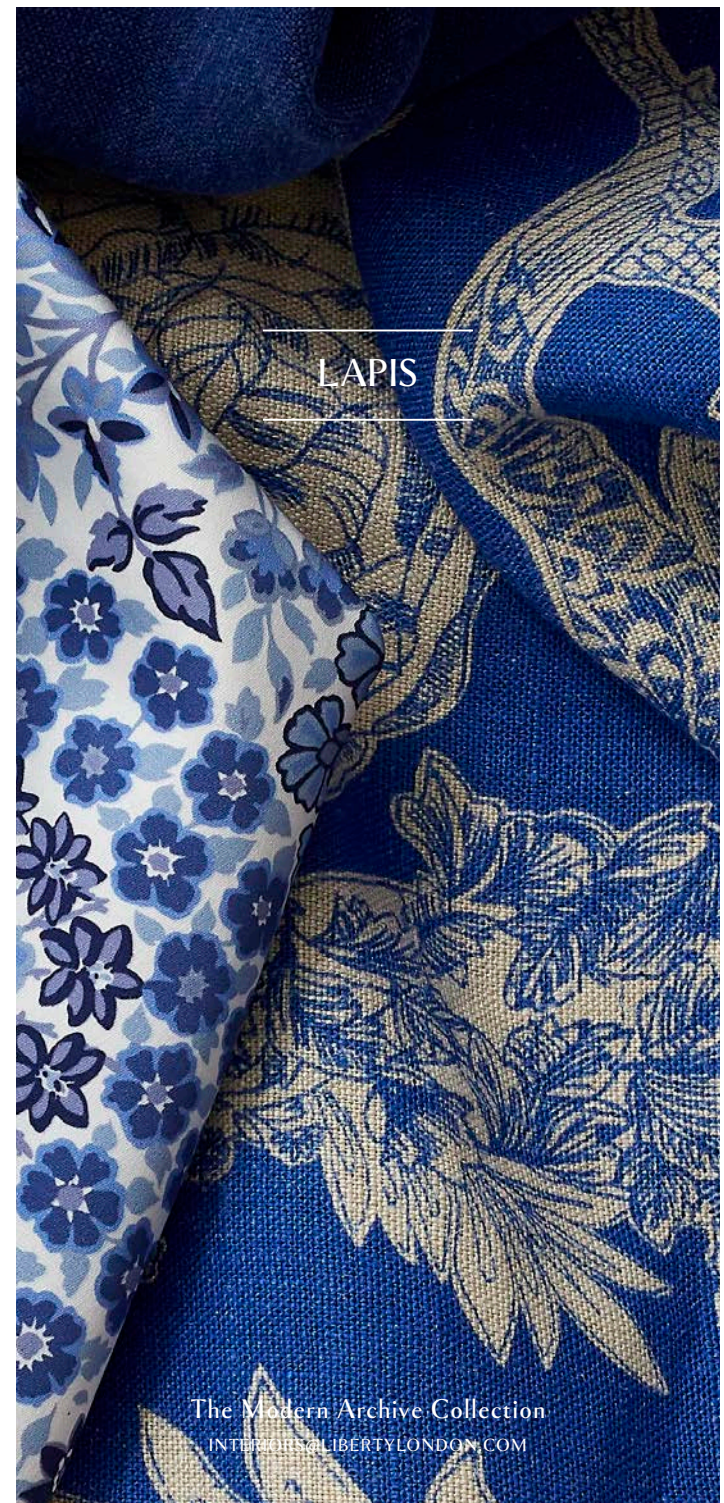


VINTAGE VELVET
Shand Voyage
Lapis

REFERENCE: 06651105C

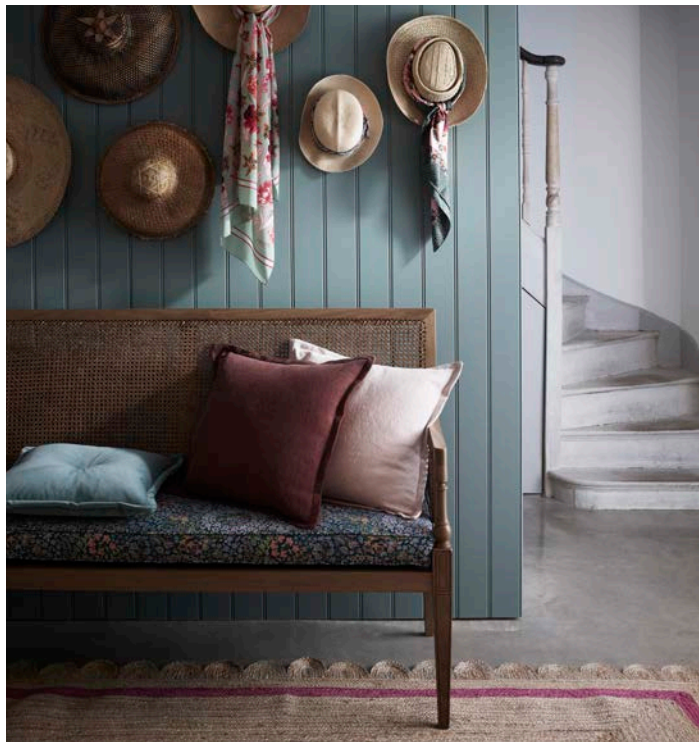


VINTAGE VELVET
Lady Kristina Rose
Lapis



LAPIS

The Modern Archive Collection
INTERIORS@LIBERTYLONDON.COM



LICHEN



Lichen pays tribute to the vivid organic shades found within the natural world. Fennel and parsnip flowers, artichoke, lilac and thistle, English songbirds coexisting with exotic peacocks in the grounds of stately homes – these are all inspirations of the Arts and Crafts movement, and of Liberty's early textile prints. This eclectic mix of brightly-coloured birds and floribunda has inspired our edit of heritage Liberty floral prints.

The Modern Archive Collection
INTERIORS@LIBERTYLONDON.COM

REFERENCE: 06581102A



CHESHAM SATEEN
Zennor Arbour
Lichen

REFERENCE: 06711101B



MARLOW LINEN
Hebe
Lichen Chartreuse

REFERENCE: 06561106B



LADBROKE LINEN
Ilanthe Bloom Multi
Dragonfly

REFERENCE: 06581101B



CHESHAM SATEEN
Marquess Garden
Lichen

REFERENCE: 06621104B



EMBERTON LINEN
Patricia
Lichen

REFERENCE: 06711101C



MARLOW LINEN
Hebe
Lichen Robin's Egg

REFERENCE: 06571103B



CHILTERN LINEN
Ilanthe Bloom Mono
Lichen

REFERENCE: 06571101A



CHILTERN LINEN
Felix Raison
Lichen Sage

REFERENCE: 06561107A



LADBROKE LINEN
Lady Kristina Rose
Dragonfly

REFERENCE: 06591101F



COTTON VELVET PLAIN
Salvia

REFERENCE: 06631101H



EMBERTON LINEN PLAIN
Acacia

REFERENCE: 06631101G



EMBERTON LINEN PLAIN
Madder

REFERENCE: 06631101F



EMBERTON LINEN PLAIN
Ointment

REFERENCE: 06591101B



COTTON VELVET PLAIN
Fennel

REFERENCE: 06631101E



EMBERTON LINEN PLAIN
Mustard

REFERENCE: 06631101K



EMBERTON LINEN PLAIN
Robin's Egg

REFERENCE: 06631101L



EMBERTON LINEN PLAIN
Starling

REFERENCE: 06591101G



COTTON VELVET PLAIN
Scarab

REFERENCE: 06786200R



IANTHE VELVET
Robin's Egg

REFERENCE: 06651105B



VINTAGE VELVET
Lady Kristina Rose
Lichen

REFERENCE: 06561104B



LADBROKE LINEN
Zennor Arbour
Lichen

REFERENCE: 06561103D



LADBROKE LINEN
Strawberry Meadowfield
Lichen

REFERENCE: 06561102B



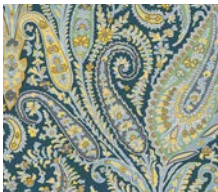
LADBROKE LINEN
Marquess Garden
Lichen Rose

REFERENCE: 06621102B



EMBERTON LINEN
Katherine Nouveau
Lichen

REFERENCE: 06621101B



EMBERTON LINEN
Felix Raison
Lichen Bright

REFERENCE: 06621101C



EMBERTON LINEN
Felix Raison
Lichen Dark

REFERENCE: 06651104B



VINTAGE VELVET
Faria Flowers
Lichen



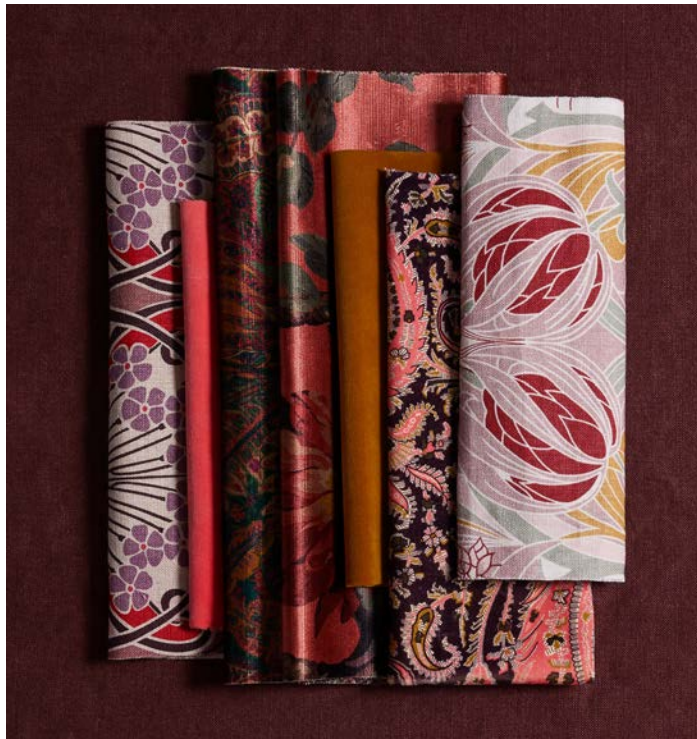
The Modern Archive Collection
INTERIORS@LIBERTYLONDON.COM



LACQUER

Mineral-rich textile pigments such as Madder, Great Burnet, Red Clover and Iron-Rich Clay were adopted by Arthur Lasenby Liberty, providing the base for this luxurious palette. Adorned with cinnabar, lacquer, coral and garnet jewel-like tones, this story is inspired by Liberty's 'Oriental Warehouse' and the buying expeditions of the late 19th century.

Extravagant and bohemian, this story suggests a journey in maximalist Art Deco graphic patterns, softened with sumptuous vintage velvets and paisleys.



REFERENCE: 06711101A



MARLOW LINEN
Hebe
Lacquer

REFERENCE: 06561104D



LADBROKE LINEN
Zennor Arbour
Pewter Plaster Pink

REFERENCE: 06621102A



EMBERTON LINEN
Katherine Nouveau
Lacquer

REFERENCE: 06621104A



EMBERTON LINEN
Patricia
Lacquer

REFERENCE: 06571104A



CHILTERN LINEN
Ianthe Bloom Stencil
Lacquer

REFERENCE: 06561103A



LADBROKE LINEN
Strawberry Meadowfield
Lacquer

REFERENCE: 06561106A



LADBROKE LINEN
Ianthe Bloom Multi
Lacquer

REFERENCE: 06591101C



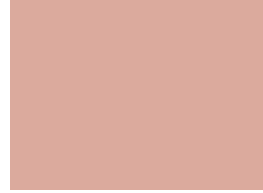
COTTON VELVET PLAIN
Bloomer

REFERENCE: 06591101B



COTTON VELVET PLAIN
Fennel

REFERENCE: 06631101F



EMBERTON LINEN PLAIN
Ointment

REFERENCE: 06631101G



EMBERTON LINEN PLAIN
Madder

REFERENCE: 06786200P



IANTHE VELVET
Plaster Pink

REFERENCE: 06591101D



COTTON VELVET PLAIN
Slipper

REFERENCE: 06631101C



EMBERTON LINEN PLAIN
Brinjal

REFERENCE: 06631101D



EMBERTON LINEN PLAIN
Sloe

REFERENCE: 06631101K



EMBERTON LINEN PLAIN
Robin's Egg

REFERENCE: 06631101H



EMBERTON LINEN PLAIN
Acacia

REFERENCE: 06651103C



VINTAGE VELVET
Shand Voyage
Jade

REFERENCE: 06651105A



VINTAGE VELVET
Lady Kristina Rose
Lacquer

REFERENCE: 03591101A



COTTON VELVET
Felix Raison
Lacquer

REFERENCE: 03591102A



COTTON VELVET
Marquess Garden
Lacquer

REFERENCE: 03591104A



COTTON VELVET
Ianthe Bloom Multi
Lichen

REFERENCE: 03591103A



COTTON VELVET
Patricia
Lacquer Bright

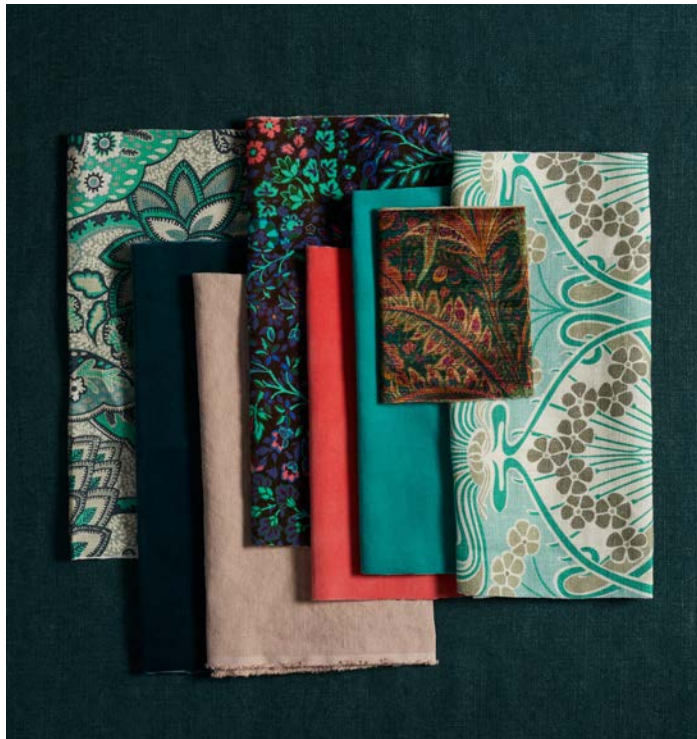


LACQUER

The Modern Archive Collection
INTERIORS@LIBERTYLONDON.COM



JADE



Saturated colour defines the Jade story, with its bold and ultra-decorative tones reminiscent of Japanese and Chinese 19th century artworks and textiles. Carved jade, fine silks and hand-painted wallpapers provide the inspiration for a concise palette of balanced hues. Jadeite and Acacia greens are warmed by blush tones of Bloomer and Ointment, providing a pared-down and limited but elegant palette. Archive florals are coloured with new yet timeless shades of green.

REFERENCE: 06621102C



EMBERTON LINEN
Katherine Nouveau
Jade

REFERENCE: 06561106D



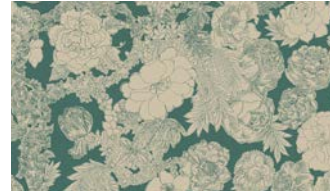
LADBROKE LINEN
Ianthe Bloom Multi
Jade

REFERENCE: 06561101C



LADBROKE LINEN
Hera Feather
Jade

REFERENCE: 06561104C



LADBROKE LINEN
Zennor Arbour
Jade

REFERENCE: 06591101E



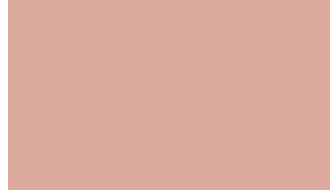
COTTON VELVET PLAIN
Jadeite

REFERENCE: 06631101H



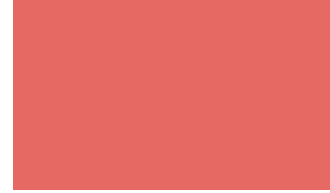
EMBERTON LINEN PLAIN
Acacia

REFERENCE: 06631101F



EMBERTON LINEN PLAIN
Ointment

REFERENCE: 06591101C



COTTON VELVET PLAIN
Bloomer

REFERENCE: 06786200F



IANTHE VELVET
Ivy

REFERENCE: 06631101L



EMBERTON LINEN PLAIN
Starling

REFERENCE: 06591101G



COTTON VELVET PLAIN
Scarab

REFERENCE: 03591103B



COTTON VELVET
Patricia
Jade

REFERENCE: 06651103C



VINTAGE VELVET
Shand Voyage
Jade

REFERENCE: 06651101C



VINTAGE VELVET
Hera Feather
Jade

REFERENCE: 03591102C

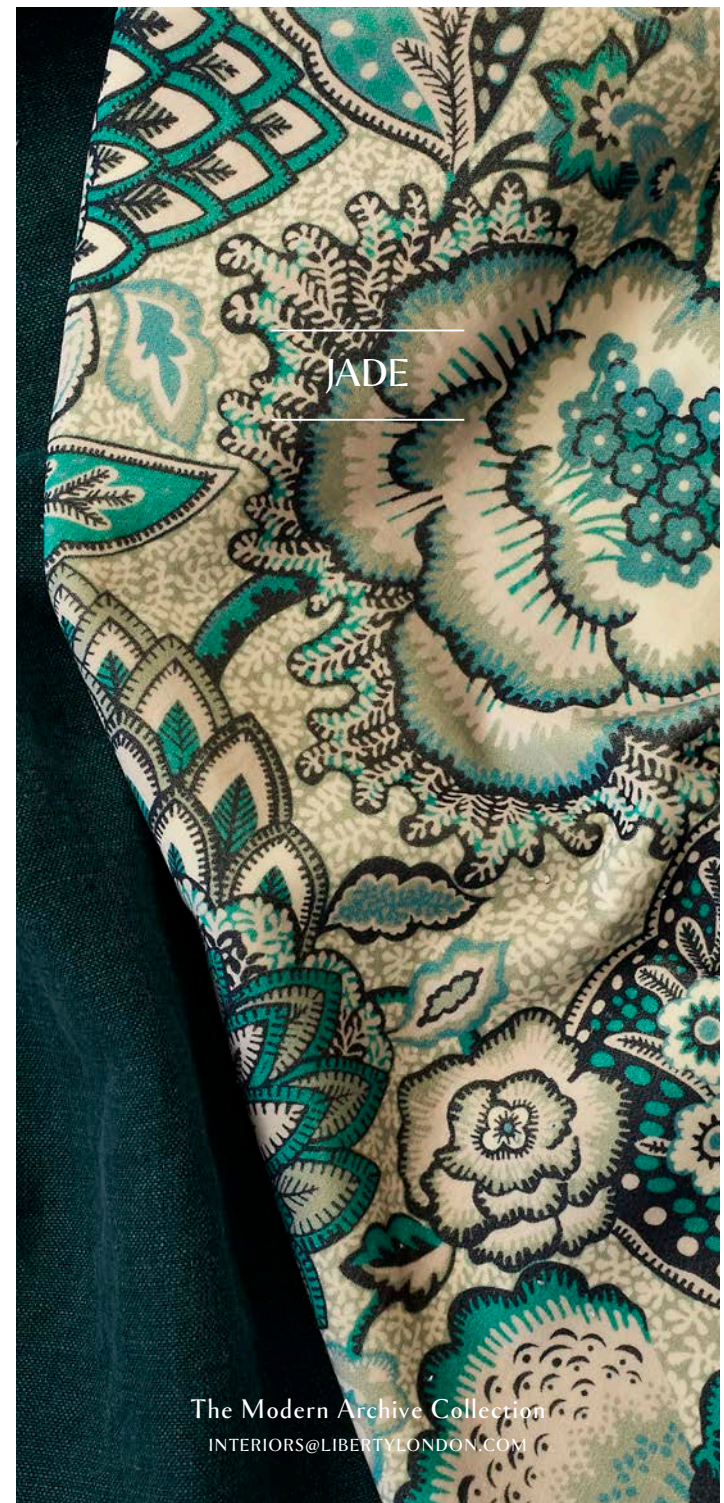


COTTON VELVET
Marquess Garden
Jade

REFERENCE: 03591101C



COTTON VELVET
Felix Raison
Jade





DRAGONFLY



Dragonfly offers a contemporary twist on the quintessential purple of the Art Nouveau period – the amethyst gemstones seen in the jewellery of the Suffragettes, and in Archibald Knox's pieces for Liberty. Brightly-shaded insects like British dragonflies further inspired the eccentric jewellery design of the era, and the discovery of Mauveine dye enhanced the use of this colour in clothing and interiors at the turn of the century. Purple is the perfect dark neutral – we have paired this colour with tones of Sloe, Bloomer, Acacia and Fennel for modern appeal.

The Modern Archive Collection
INTERIORS@LIBERTYLONDON.COM

REFERENCE: 06621101A



EMBERTON LINEN
Felix Raison
Dragonfly

REFERENCE: 06561102A



LADBROKE LINEN
Marquess Garden
Dragonfly Jewel

REFERENCE: 06561101A



LADBROKE LINEN
Hera Feather
Dragonfly

REFERENCE: 06561103B



LADBROKE LINEN
Strawberry Meadowfield
Dragonfly

REFERENCE: 06561107A



LADBROKE LINEN
Lady Kristina Rose
Dragonfly

REFERENCE: 06591101B



COTTON VELVET PLAIN
Fennel

REFERENCE: 06591101C



COTTON VELVET PLAIN
Bloomer

REFERENCE: 06631101C



EMBERTON LINEN PLAIN
Brinjal

REFERENCE: 06631101D



EMBERTON LINEN PLAIN
Sloe

REFERENCE: 06786200K



IANTHE VELVET
Dragonfly

REFERENCE: 06591101F



COTTON VELVET PLAIN
Salvia

REFERENCE: 06631101H



EMBERTON LINEN PLAIN
Acacia

REFERENCE: 03591101A



COTTON VELVET
Felix Raison
Lacquer

REFERENCE: 03591101B



COTTON VELVET
Felix Raison
Dragonfly

REFERENCE: 03591102B



COTTON VELVET
Marquess Garden
Dragonfly

REFERENCE: 06651101A



VINTAGE VELVET
Hera Feather
Dragonfly

REFERENCE: 06651103A

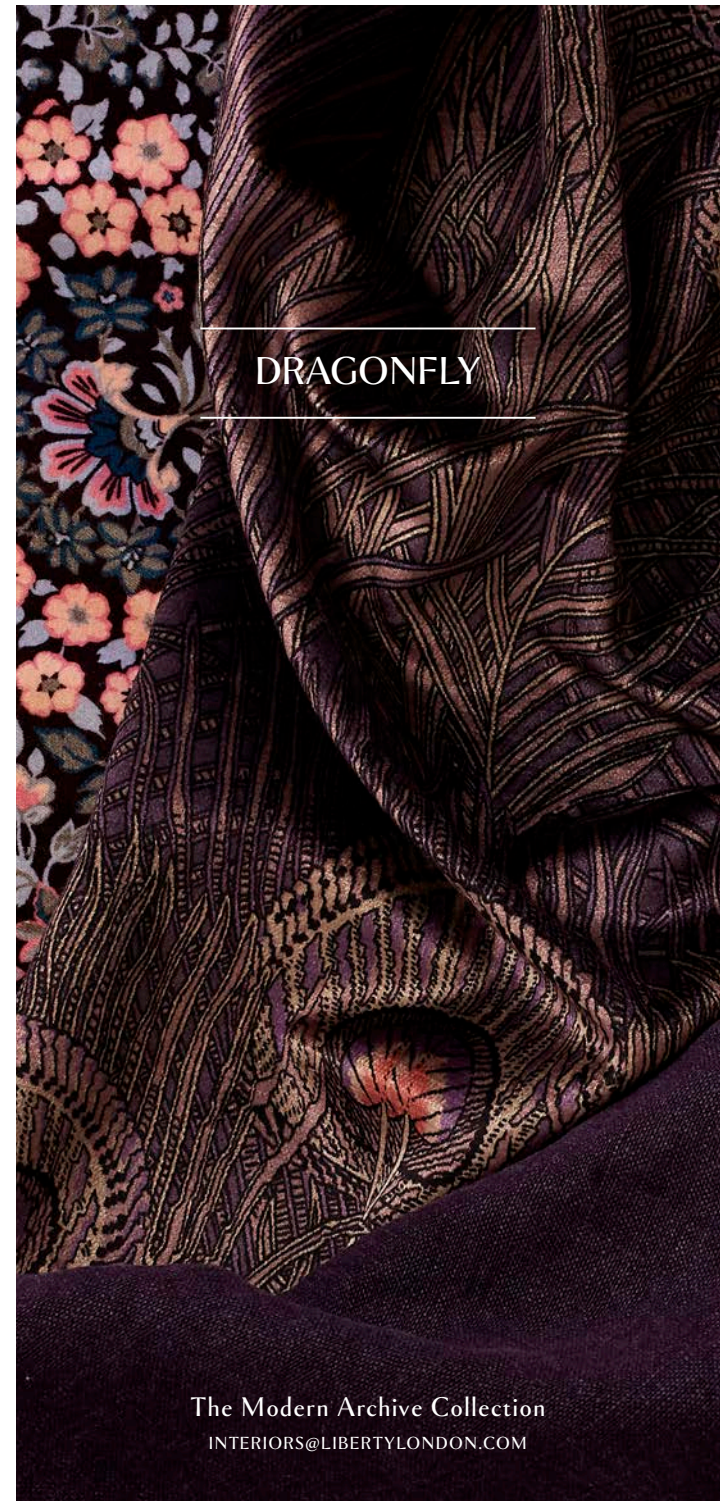


VINTAGE VELVET
Shand Voyage
Lacquer

REFERENCE: 06651104A



VINTAGE VELVET
Faria Flowers
Dragonfly



DRAGONFLY

COLLECTION BY COLOUR



COLLECTION BY PATTERN

| | | | | | | | | | | | | | | |
|---------------------------|-------------|----------------|---------|---------------------|-----------------|---------------------|-------------|-------------------|--------------------|---------------------|----------------------|---------------------|--------|--------|
| FELIX RAISON | DRAGONFLY | JADE | LACQUER | LICHEN BRIGHT | LICHEN DARK | PEWTER | JADE | | LACQUER | LICHEN CHARTREUSE | LICHEN ROBIN'S EGG | PEWTER PLASTER PINK | | |
| | | | | | | | | HEBE | | | | | | |
| SHAND VOYAGE | JADE | LACQUER | LAPIS | | HERA | DRAGONFLY | JADE | LAPIS | PEWTER | | | DRAGONFLY | LICHEN | |
| | | | | | | | | | | | | | | |
| KATHERINE NOUVEAU | JADE | LACQUER | LICHEN | | MARQUESS GARDEN | DRAGONFLY JEWEL | DRAGONFLY | JADE | LACQUER | LAPIS | LICHEN ROSE | LICHEN | | |
| | | | | | | | | | | | | | | |
| STRAWBERRY MEADOWFIELD | DARK PEWTER | DRAGONFLY | LACQUER | LICHEN | LAPIS | PEWTER PLASTER PINK | PEWTER | | LADY KRISTINA ROSE | DRAGONFLY | LACQUER | LAPIS | LICHEN | PEWTER |
| | | | | | | | | | | | | | | |
| ZENNOR ARBOUR | JADE | LAPIS | LICHEN | PEWTER PLASTER PINK | | IANTHE BLOOM MULTI | DARK PEWTER | DRAGONFLY | JADE | LACQUER | LAPIS | LICHEN | PEWTER | |
| | | | | | | | | | | | | | | |
| PATRICIA | JADE | LACQUER BRIGHT | LACQUER | LAPIS | LICHEN | PEWTER | | IANTHE BLOOM MONO | LICHEN | PEWTER PLASTER PINK | | LACQUER | LAPIS | PEWTER |
| | | | | | | | | | | | IANTHE BLOOM STENCIL | | | |

PLAINS COLLECTION

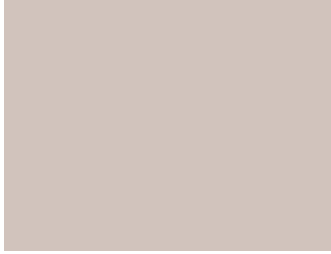
Grograin



Mole



Down



Brinjal



Sloe



Fennel



Mustard



Bloomer



Ointment



Slipper



Madder



Jadeite



Acacia



Lapis



Robin's Egg



Salvia



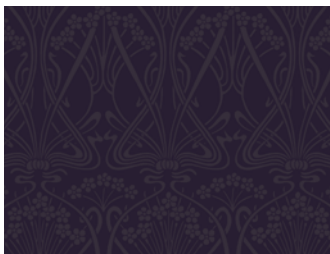
Starling



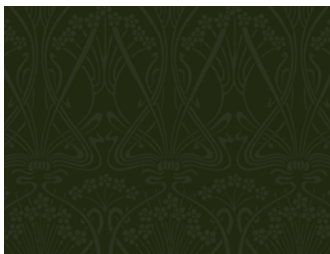
Scarab



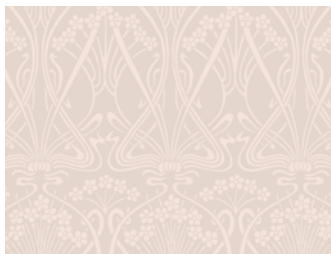
Ianthe Velvet Dragonfly



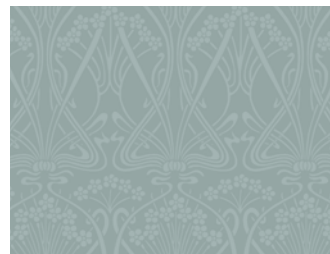
Ianthe Velvet Ivy



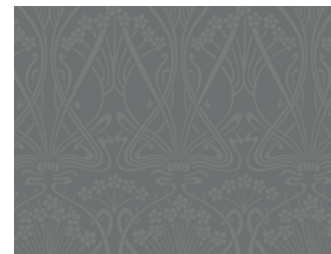
Ianthe Velvet Plaster Pink



Ianthe Velvet Robin's Egg



Ianthe Velvet Pewter





FABRIC USAGE AND DESCRIPTIONS

Marlowe and Chiltern Linen – These provide a superlight crisp base for our finer scale patterns, and filigree lines for Liberty drapery. Made of 100% linen, it is perfect for windows, where maximum light and fresh bright drapery is required.

Ladbroke Linen – A beautiful heavyweight 100% dual-purpose linen. The weight provides a superior drape and is also suitable for domestic upholstery. The fine weave allows perfect interpretation of the Liberty print collection. Two base qualities have been selected to further enhance the colours of each collection.

Emberton Linen – A heavyweight high performance luxurious linen. The finishing process provides a superior hand feel and an elegant drape. A small percentage of nylon fibre provides excellent structural stability, high performance abrasion, plus protection against wear and tear. This fabric has a soft and natural appearance that makes it perfect for both luxurious residential and general contract use, as it can be FR treated to contract standards.

Vintage Velvet - A beautiful mixed-fibre dual-purpose velvet. Luxurious in feel and vibrant in colour, it is suitable for heavy domestic and severe contract with additional FR treatment. This base has an elegant drape that makes it perfect for heavier curtains where blackout or draft excluding qualities may be required.

Cotton Velvet – High-percentage cotton velvet containing a small amount of polyester fibre for structural stability and exceptional abrasion rating. This velvet provides luxury for residential interiors, plus the functionality needed for high-traffic contract use. A perfect base for rich saturated tones and bright colours. This also has an elegant drape, making it ideal for heavier curtains where blackout or draft-excluding qualities may be required. With additional FR treatment, this fabric passes heavy contract code.

Chesham Sateen – A beautiful 100% cotton sateen with exceptional drape and soft sheen. The tight flat weave enables absolute clarity of the fine and filigree liberty print while showing true and clear colour. Suitable for windows where maximum light and fresh bright drapery is required. Also a luxurious option for light domestic upholstery.

COLLECTION BY PATTERN

| | | | | | | |
|--------------------------|--------------------|----------------------|-----------------------|------------------------|--------|-------------|
| FARIA FLOWERS | DRAGONFLY | LICHEN | | | | |
| | LACQUER | LICHEN CHARTREUSE | LICHEN ROBIN'S EGG | PEWTER PLASTER PINK | | |
| HEBE | DRAGONFLY | JADE | LAPIS | PEWTER | | |
| | DRAGONFLY JEWEL | DRAGONFLY | JADE | LACQUER | LAPIS | LICHEN ROSE |
| MARQUESS GARDEN | DRAGONFLY | LACQUER | LAPIS | LICHEN | PEWTER | |
| | DRAGONFLY JEWEL | DRAGONFLY | JADE | LACQUER | LAPIS | LICHEN ROSE |
| LADY KRISTINA ROSE | DRAGONFLY | LACQUER | LAPIS | LICHEN | PEWTER | |
| | DRAGONFLY JEWEL | DRAGONFLY | JADE | LACQUER | LAPIS | LICHEN ROSE |
| IANTHE BLOOM MULTI | DRAGONFLY | LACQUER | LAPIS | LICHEN | PEWTER | |
| | DRAGONFLY JEWEL | DRAGONFLY | JADE | LACQUER | LAPIS | LICHEN ROSE |
| IANTHE BLOOM MONO | DRAGONFLY | LACQUER | LAPIS | LICHEN | PEWTER | |
| | DRAGONFLY JEWEL | DRAGONFLY | JADE | LACQUER | LAPIS | LICHEN ROSE |

| | | | |
|-------------------------|---------|-------|--------|
| IANTHE BLOOM STENCIL | LACQUER | LAPIS | PEWTER |
| | LACQUER | LAPIS | PEWTER |

COLLECTION BY PATTERN

| | | | | | | | |
|---------------------------|-------------|----------------|---------|------------------------|-------------|------------------------|--------|
| IANTHE BLOOM STENCIL | LACQUER | LAPIS | PEWTER | | | | |
| | | | | | | | |
| | | | | | | | |
| HERA | DRAGONFLY | JADE | LAPIS | PEWTER | | | |
| | | | | | | | |
| | | | | | | | |
| FELIX RAISON | DRAGONFLY | JADE | LACQUER | LICHEN BRIGHT | LICHEN DARK | PEWTER | JADE |
| | | | | | | | |
| | | | | | | | |
| SHAND VOYAGE | JADE | LACQUER | LAPIS | | | | |
| | | | | | | | |
| | | | | | | | |
| KATHERINE NOUVEAU | JADE | LACQUER | LICHEN | | | | |
| | | | | | | | |
| | | | | | | | |
| STRAWBERRY MEADOWFIELD | DARK PEWTER | DRAGONFLY | LACQUER | LICHEN | LAPIS | PEWTER PLASTER PINK | PEWTER |
| | | | | | | | |
| | | | | | | | |
| ZENNOR ARBOUR | JADE | LAPIS | LICHEN | PEWTER PLASTER PINK | | | |
| | | | | | | | |
| | | | | | | | |
| PATRICIA | JADE | LACQUER BRIGHT | LACQUER | LAPIS | LICHEN | PEWTER | |
| | | | | | | | |
| | | | | | | | |

Please Note: Please note our fabrics are made from high quality natural materials. The natural qualities of linen mean that there may be slubs and slight variations in weave. This may affect the penetration of dye in some places. This is not a defect of the fabric – moreover it shows quality and integrity of the natural yarn and printing process. This can be seen on larger pieces and on showroom drapes. Please ask for assistance if you require clarification prior to purchase. In addition, there may be some shade variation from batch to batch. Please order a current stock cutting if you require an exact colour match. Technical specifications are shown on the reverse of each sample.

Copyright: The copyright and any other intellectual property rights in the designs on this fabric belong to Liberty Fabric Ltd. The designs may not be copied, adapted or translated into any other media without the prior written permission of Liberty. Liberty takes very seriously the protection of its intellectual property and will take immediate legal steps to defend its rights in the event of any unauthorised use of its designs

Testing: All fabrics have been tested in accordance to the standards shown on the reverse of each fabric. Technical data sheets and sight of testing certificates can be supplied upon request. Where FR treatment is indicated an additional cost may apply. Liberty can supply details of fabricators. Please check with your upholsterer and furniture manufacturers prior to ordering as their processes may differ and it is their responsibility to confirm which FR code is required.

Flammability: Domestic Upholstery: Unless indicated, you will need to use an inter-liner or apply an additional FR treatment, depending on your upholsterer to comply with UK Match test. All of our upholstery fabrics pass UK cigarette test. Please ask your upholsterer or furniture manufacturer to confirm if they are able to use an inter-liner. If they cannot, please request information from Liberty Sales Staff for FR treatment available for match test certification, prior to ordering your fabric.

Contract Upholstery: Please refer to the technical sheet for each individual fabric. Liberty have tested all of our fabrics in accordance with UK flammability codes. Where fabrics do not inherently pass a code, details are provided of FR treatments available and all fabrics have been pre tested to ensure full compliance once treated. Please ask a member of staff to assist with details of FR treatment required.

Care and Cleaning: We recommend that all velvets and upholstery fabrics are regularly brushed or vacuumed with an upholstery fitting, both to prolong the life of the fabric and to maintain its appearance. Light spot cleaning can be carefully carried out, but we recommend spot testing in a less visible area. Professional dry cleaning as necessary.