

TAPPETI

La collezione di tappeti in-outdoor sono una novità assoluta per completare l'arredamento con un elemento protagonista del salotto come degli spazi "en plein air". Tappeti tono su tono, con sofisticati decori a quadro o spigati e con tutte le performance tecniche dell'acrilico tinto massa. Tonalità écru, cioccolato, lilla, verde acceso, turchese, blu che si accordano perfettamente con i tessuti per l'arredamento MARIAFLORA.

The collection of in-outdoor carpets are an absolute novelty to complete home furnishings with a living-room protagonist also for outdoor areas "en plein air". Tone on tone carpets, with sophisticated square or striped decorations and all of the technical performance of acrylic solution dyed. The tones are écru, chocolate, lilac, bright green, turquoise and blue which blend perfectly with the MARIAFLORA home furnishing fabrics.

Die erste Kollektion von in-outdoor Teppichen sind Eine absolute Neuheit zur Komplettierung der Wohnzimmereinrichtung, die sie auch auf ihrer outdoor Wohnfläche einsetzen können: im Freien. Ton in Ton gestaltete Teppiche, mit hochwertigen Karo und Streifenmustern und der kompletten technischen Performance des spinndüsengefärbten Acryls. Die Farben sind ecru, schokobraun, lila, hellgrün, türkis, und blau; immer passend und perfekt abgestimmt auf die Farben der MARIAFLORA Einrichtungstoffe.

La collection de tapis in-outdoor sont une nouveauté absolue pour compléter la décoration avec un élément protagoniste tant au milieu du salon qu'en plein air. Tapis ton sur ton, avec des décorations sophistiquées à carreaux ou sergés et qui conservent toutes les performances techniques de l'acrylique teint en masse. Des couleurs écru, chocolat, lilas, vert brillant, turquoise, bleu qui s'harmonisent parfaitement avec les tissu d'ameublement MARIAFLORA.

— Carpet : Dante 16, Dante 19, Raffaello 97

Border : edge banding 3/5 cm

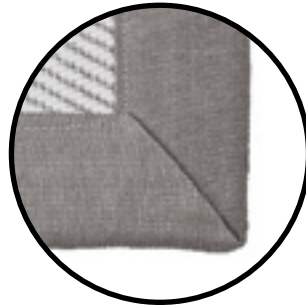


BORDATURA

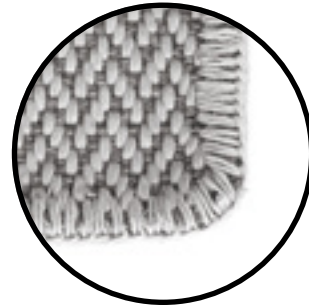
edge banding Rand streifenbildung bordure foncée



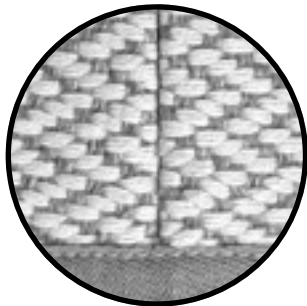
cm 3 - col 926



cm 5 - col 926



punto cavallo



giunzione

junction
Kreuzung
jonction

Punto cavallo disponibile nei seguenti colori

Punto cavallo available in the following colors

Punto cavallo in den folgenden Farben erhältlich

Punto cavallo disponible dans les couleurs suivantes



col. 14



col. 16



col. 19



col. 22



col. 24



col. 81



col. 92



col. 107

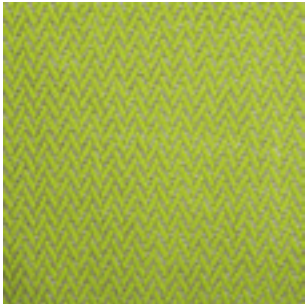


col. 926

Nota: I colori riportati potrebbero variare rispetto agli originali. Prima di acquistare si consiglia di ordinare un campione.
Note: The colours shown may vary from the original ones. It is advisable to order a sample before buying it.

SU MISURA

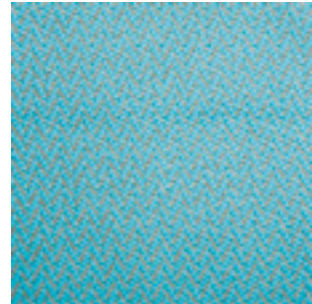
custom made Maßarbeit sur mesure



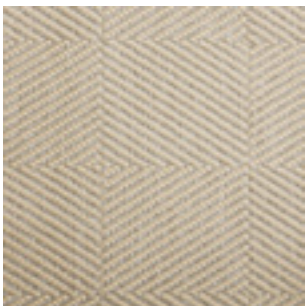
dante 16



dante 19



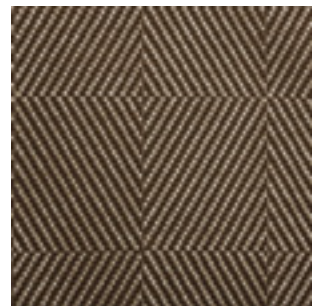
dante 22



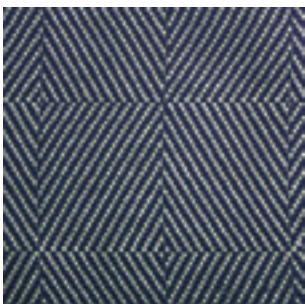
raffaello 14



raffaello 24



raffaello 81



raffaello 92



raffaello 97

— Carpet : Dante 16, Dante 19, Raffaello 97



Border : edge banding 3/5 cm

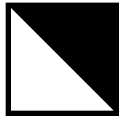
— Carpet : Dante 19

Border : Punto cavallo

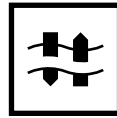


CARATTERISTICHE TECNICHE

technical features



In and Outdoor



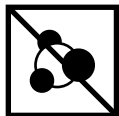
Breathable



Soil resistant



Colour fast to light 7/8



Mould resistant



Oil and water repellent



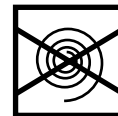
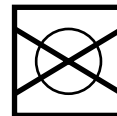
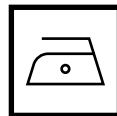
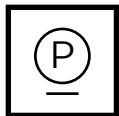
100% Acrylic solution dyed



Warranty 6 year (only colour fast)

CONDIZIONI DI MANUTENZIONE

conditions of maintenance



Tessuti con alte performance per drappaggi, tappezzeria e qualsiasi altro rivestimento. In 100% Acrilico tinto massa resistono all'aperto, all'acqua, ai raggi UVA e all'abrasione. Ragione per cui i tessuti MARIAFLORA hanno carattere e durata, più di altri. Sostanziosi ed eleganti colori per arredare interno ed esterno.

High performance fabrics for drapery, upholstery or anywhere you need the good stuff. MARIAFLORA In-Outdoor fabrics are woven with 100% Acrylic solution dyed which repels water, is stain and mold resistant and has a 6 year color fade guarantee. Beautiful Italian fabrics rich in color and design. Performance fabrics for everyday use.